

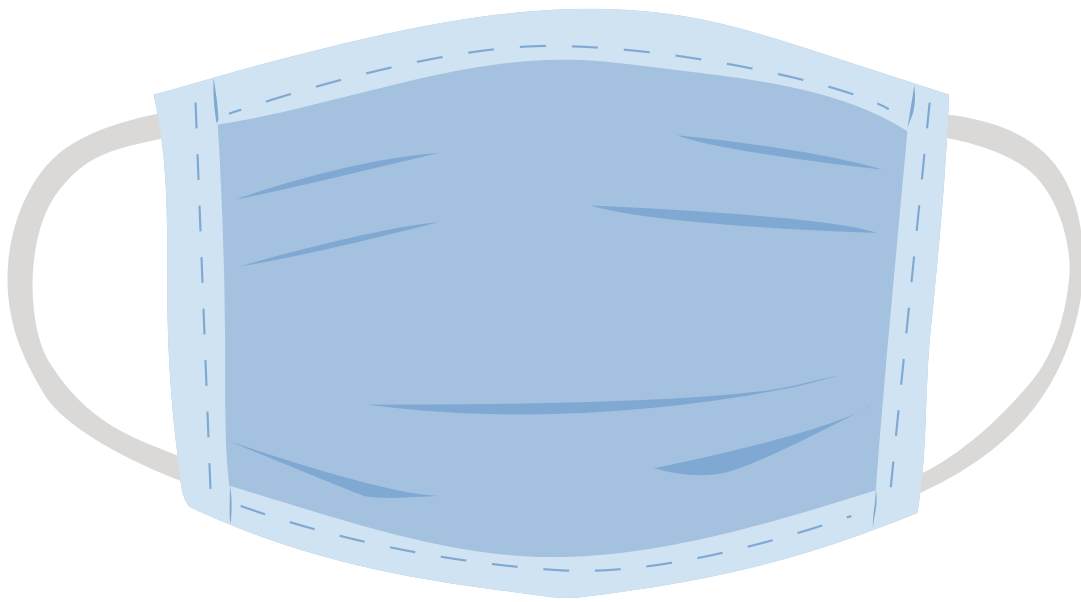
An illustration of a hand holding a teal surgical mask. The hand is positioned at the top right, with fingers gripping the top edge of the mask. The mask is rectangular with vertical pleats and a curved bottom edge. It has two teal loops for ear loops. The background is white with teal decorative shapes at the top left and bottom right.

MASKS REQUIRED

Mask or face covering use required for ages five and older.

Required by the Governor's July 15 directive. Visit covid19.mt.gov for more information.

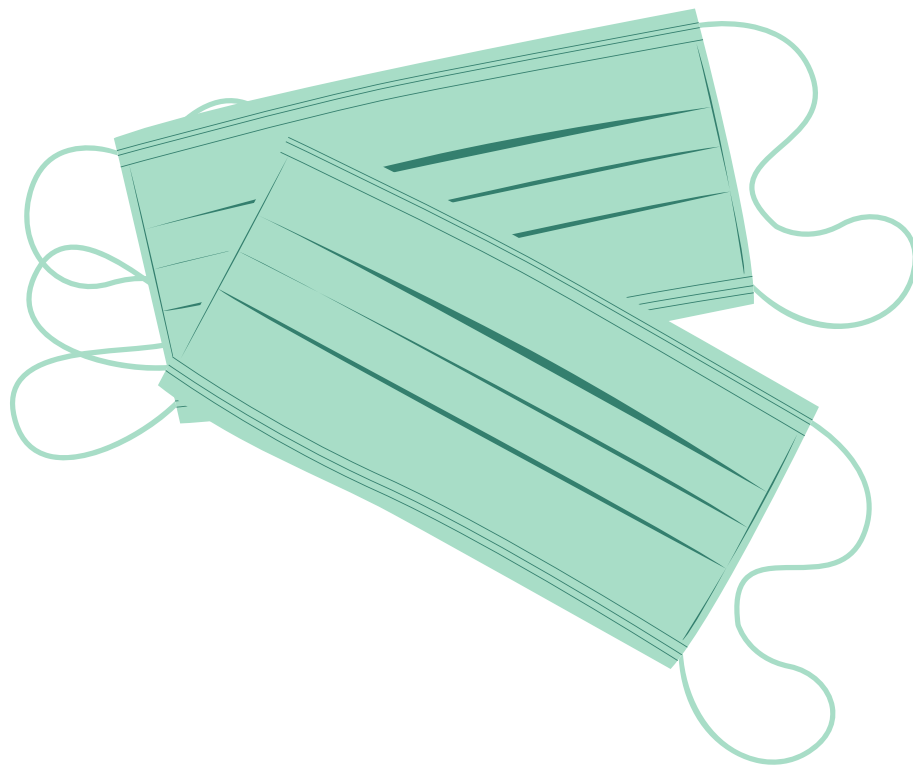
MASKS REQUIRED



Mask or face covering use
required for ages five and older.

Required by the Governor's July 15
directive. Visit covid19.mt.gov for more
information.

MASKS REQUIRED



**Mask or face covering use
required for ages five and older.**

Required by the Governor's July 15
directive. Visit covid19.mt.gov for more
information.

MASKS REQUIRED



**Mask or face covering
use required for ages five
and older.**

Required by the Governor's July 15
directive. Visit covid19.mt.gov for
more information.



MASKS REQUIRED

Mask or face covering
use required for ages
five and older.

Required by the Governor's July 15
directive. Visit covid19.mt.gov
for more information.

MASKS REQUIRED

Mask or face covering
use required for ages
five and older.

**Required by the Governor's July 15
directive. Visit [covid19.mt.gov](https://www.covid19.mt.gov)
for more information.**

