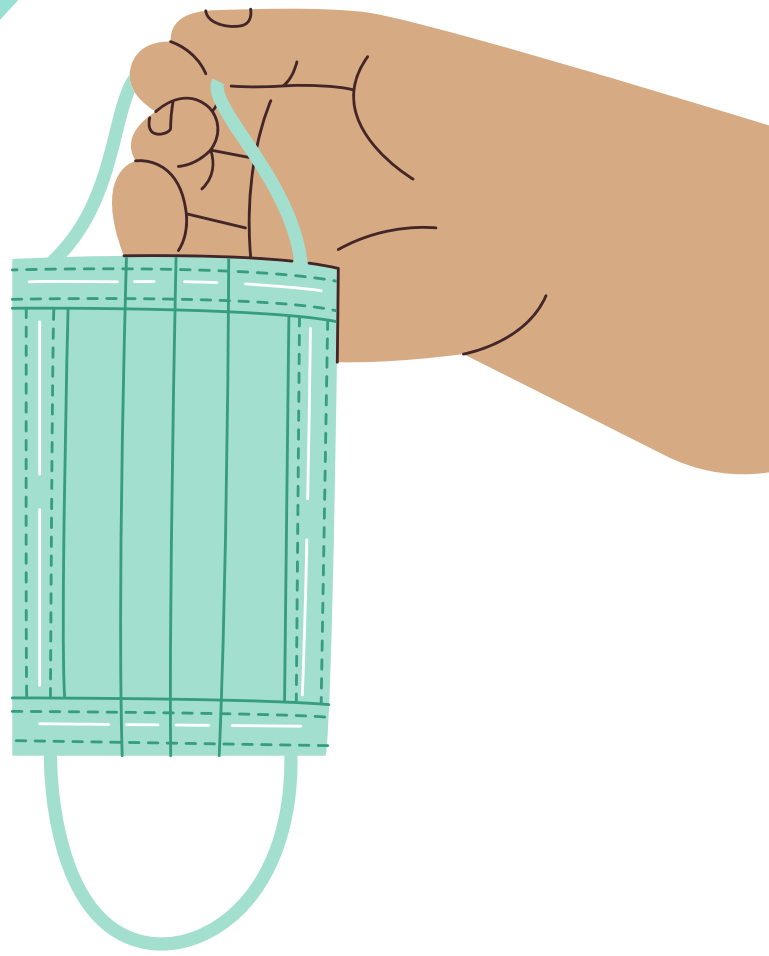
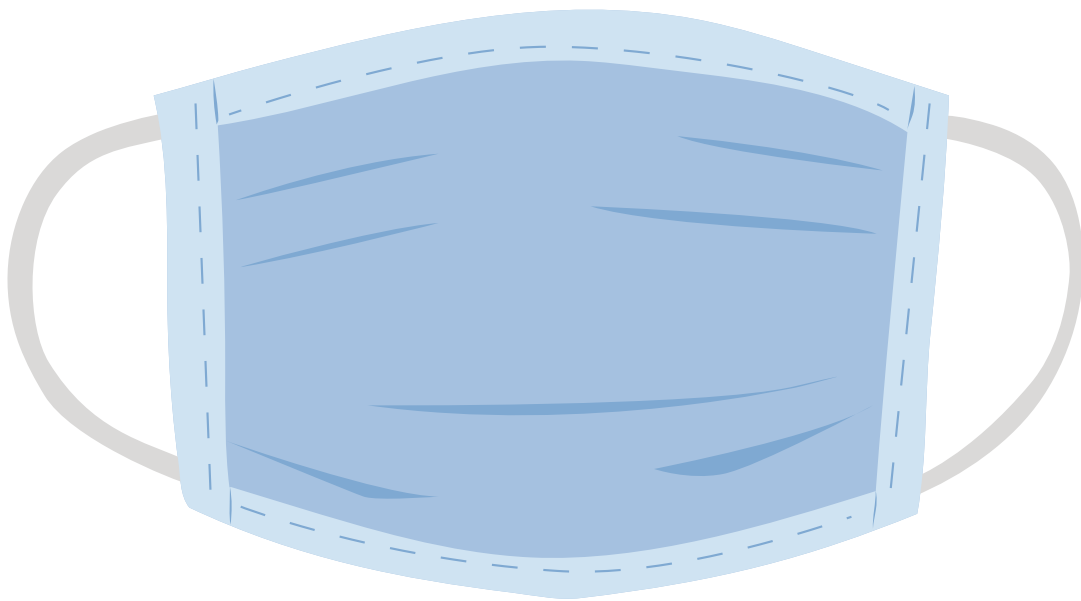


MASKS REQUIRED



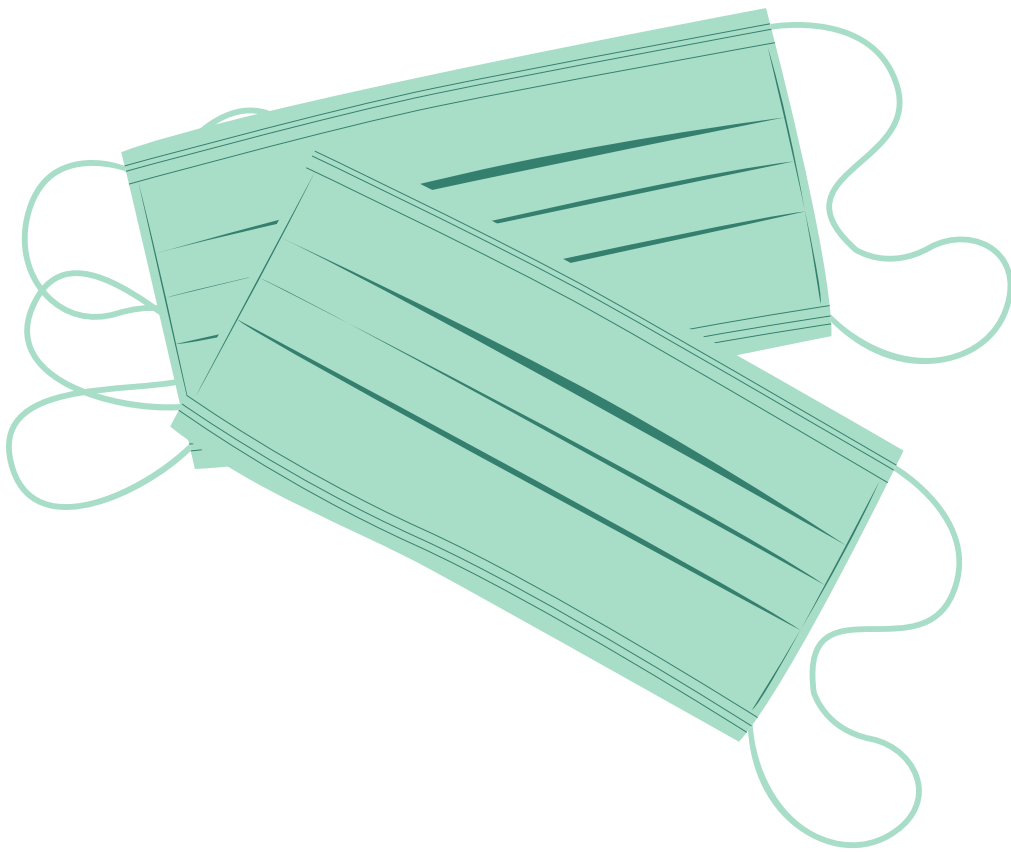
Mask or face covering
use required for ages
five and older.

MASKS REQUIRED



**Mask or face covering
use required for ages
five and older.**

MASKS REQUIRED



**Mask or face covering
use required for ages five
and older.**

MASKS REQUIRED



**Mask or face
covering use
required for ages
five and older.**



MASKS REQUIRED

Mask or face covering use required for ages five and older.

MASKS REQUIRED

Mask or face covering use required for ages five and older.

